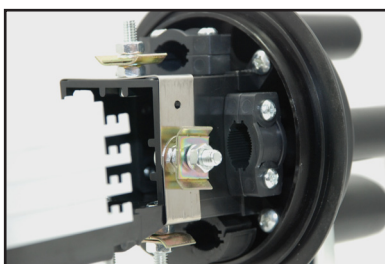
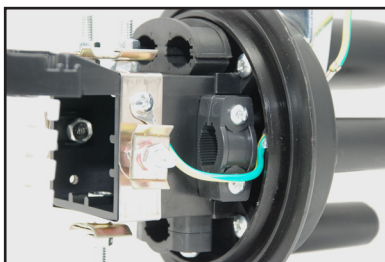
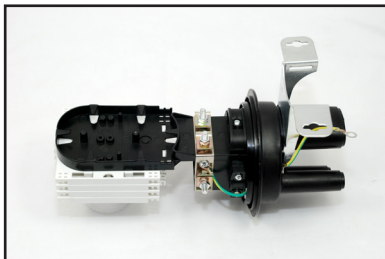
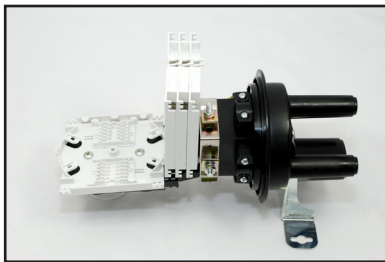


# Fiber optic splice closures

## Fiber optic splice closure I-M.048.3.1, 48F



Features	Fiber optic splice closure I-M.048.3.1
Number of ports	3 round ports (Ø17 mm) 1 oval port (dimensions: 44x27 mm)
Material	Polypropylene PP
Colour	Black
Height	300 mm
Cover diameter	120 mm
Weight	2.1 kg
Protection	IP68
Number of splice trays	4
Max. fiber optic splice sleeves	144
Operating temperature	-35°C~+65°C

Equipment
Wall fixing bracket
Clamp for pole fixing
Fiber optic splice sleeve (x48)
Heat shrink sleeves (x3)
Markers
Insulation tape
Vent

Application
Aerial systems
Ground installations
Duct systems

- Splice sleeves protection of fiber optic cables against mechanical dangers and changeable weather conditions
- Resistance to substances occurring in duct systems
- Low and high temperature resistant
- UV, water resistant

- Heat shrink sleeves for all ports
- Wall or pole fixing

